

★ ★ CHICAGO ★ ★  
**THEATER WORKS**  
EVENTS

# CORPORATE MEETINGS







# WHO WE ARE

Chicago Theater Works is a family-oriented business dedicated to creating fantastic meetings in the heart of the Lakeview area.

The venue offers 3,200 square feet of meeting space with flexible configurations at competitive rates.

Chicago Theater Works offers various services including technology services, onsite beverage service, and onsite professional staff support to complement every event. We welcome outside caterers and are very flexible with our offerings.



# MEETING ROOM

Daily **\$1,300**  
Half Day **\$900**

**Dimensions: 66'2 X 45'6**

MEETING ROOM CAPACITY:

Theater: 200. | Class Room: 80

Full Rounds: 160 | Crescent Rounds: 80



- Full use of our venue for 8 hours
- On-site staff person for your event
- Green Room/Speak Ready Room
- Wireless internet
- Beverages Packages starting at \$5 per person.
- On Site planning meeting in which we review your timeline for your event, plan how we will assist and address any questions or specific needs for your meeting.
- Amenities: Projector Screen - Podium (2) Microphones - In-house Sound System - Riser

All room rates are net non-commissionable and subject to change. The tax rate is 11.25%

The classroom-style configuration accommodates a three-person-per-table or two-person-per-table setup.

All room configurations outlined above are listed at maximum capacity with or without available space for audio-visual and catering. Maximum capacities for each are listed above.





## LOCATION

We are located in Lakeview on Belmont between Sheffield and Racine. We are two/ blocks west of the Red, Brown and Purple lines. We are also on multiple 24/7 bus routes.

## RESTROOMS

Our venue has two large restrooms and two private, unisex restrooms. There is also a dressing room with iron, steamer, washer and dryer.

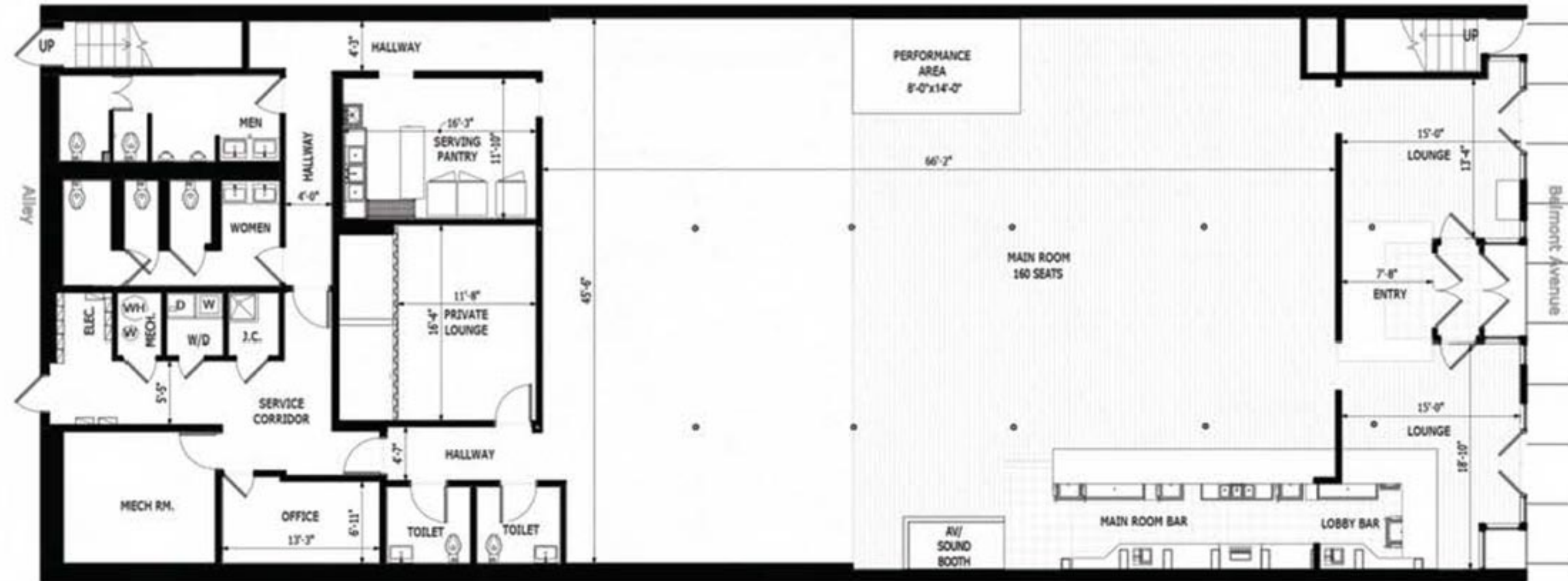
## PRIVATE SUITE

We have a staging kitchen with a 3-compartment sink, commercial refrigerator, ice maker, convection oven, microwave and stainless prep table. There is an extra charge for using the kitchen

## PARKING

A surface lot 1.5 blocks away is available for rental.

## VENUE MAP



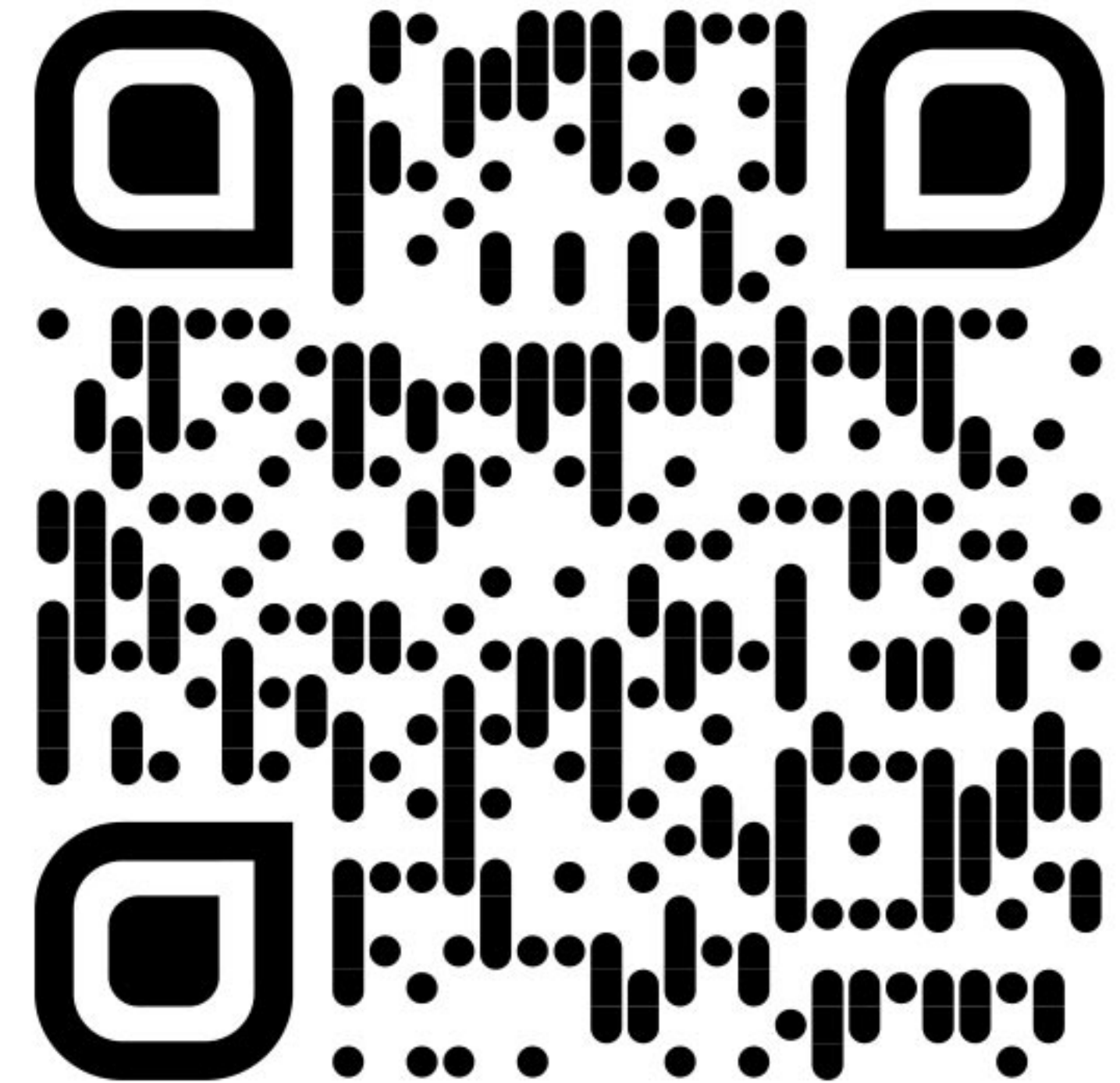


# NAISHA WILLIAMS

SALES DIRECTOR

312-439-7070

Naisha@ChicagoTheaterWorks.com



ChicagoTheaterWorks.com